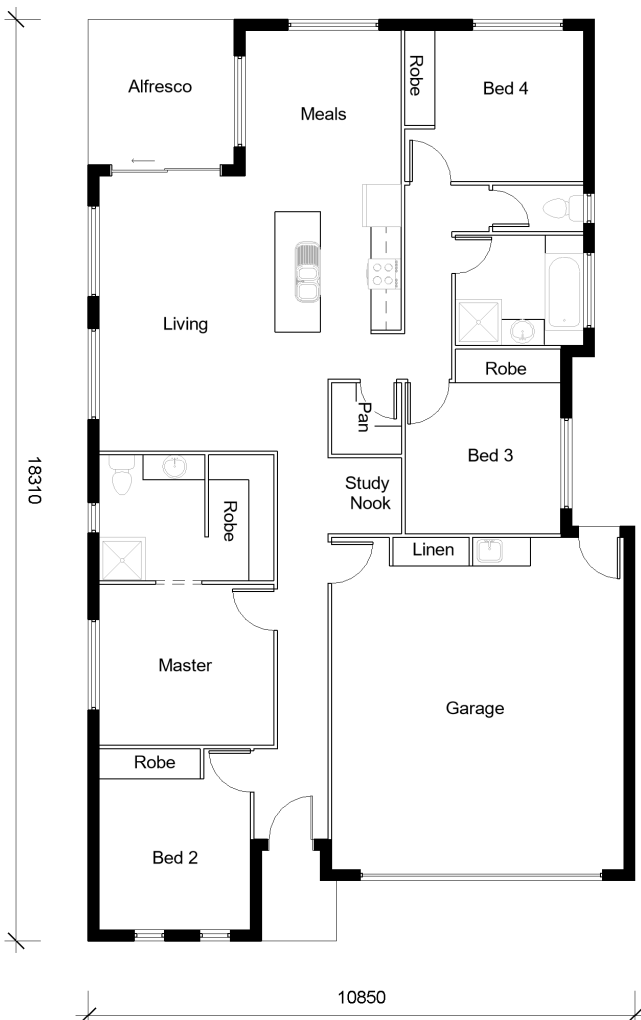


IVY 180



4



2



2

Bedrooms

Master:	3.2m X 3.47m
Bed 2:	3.0m X 3.0m
Bed 3:	3.0m X 3.9m
Bed 4:	3.0m X 2.95m

Other Areas

Living:	5.47m X 3.47m
Media:	3.4m X 4.0m
Kitchen:	2.9m X 2.5m
Garage:	5.8m X 6.6m

House Dimensions

Floor:	171m ²
Alfresco:	8.29m ²
Portico:	2.51m ²
Total Area:	181.8m ²
House Width:	10.85m
House Length:	18.310m

Murray Griffith

0407 230 367

murray@djroberts.com.au

djroberts.com.au

Images in this brochure may depict fixtures, finishes and features that are not included in our standard inclusions list. For detailed house pricing please talk to a sales consultant. Dimensions are approximate, please speak to a consultant.