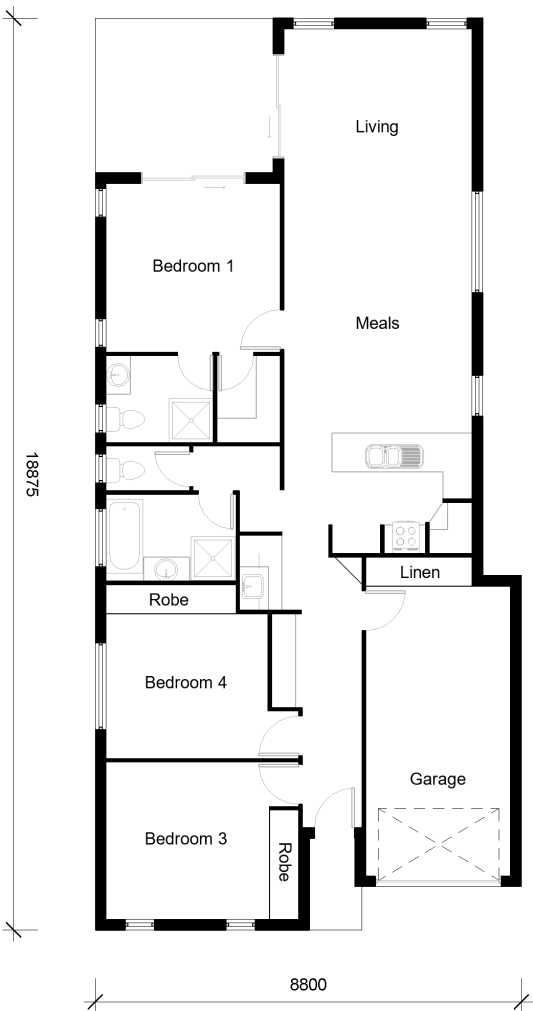


# JASPER 155



3



2



1

## Bedrooms

- Bed 1: 3.0m X 3.0m
- Bed 2: 3.2m X 3.3m
- Bed 3: 3.0m X 3.6m

## Other Areas

- Living/Meals: 8.3m X 3.8m
- Kitchen: 2.5m X 2.8m
- Garage: 3.0m X 3.6m

## House Dimensions

- Floor: 148m<sup>2</sup>
- Alfresco: 12m<sup>2</sup>
- Portico: 3m<sup>2</sup>
- Total Area: 155m<sup>2</sup>
- House Width: 8.8m
- House Length: 18.8m

**Murray Griffith**  
**0407 230 367**  
murray@djroberts.com.au

[djroberts.com.au](http://djroberts.com.au)

Images in this brochure may depict fixtures, finishes and features that are not included in our standard inclusions list. For detailed house pricing please talk to a sales consultant. Dimensions are approximate, please speak to a consultant.