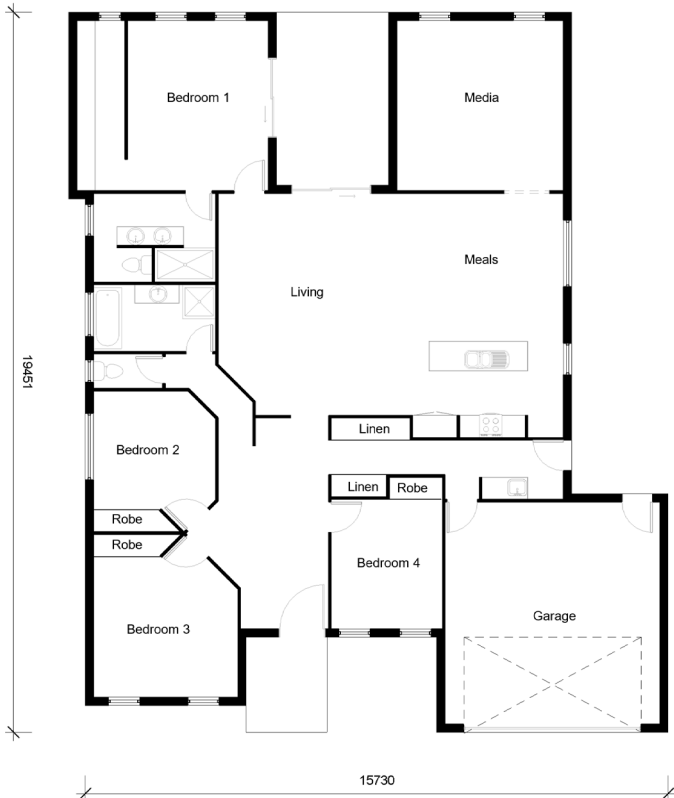


# WILLOW



4



2



2

## Bedrooms

<b>Bed 1:</b>	4.6m X 3.8m
<b>Bed 2:</b>	4.0m X 3.3m
<b>Bed 3:</b>	3.9m X 3.8m
<b>Bed 4:</b>	4.2m X 3.0m

## Other Areas

<b>Media:</b>	4.6m X 4.5m
<b>Living:</b>	5.3m X 5.3m
<b>Meals:</b>	3.3m X 4.0m
<b>Kitchen:</b>	4.0m X 2.6m
<b>Garage:</b>	5.8m X 6.0m

## House Dimensions

<b>Floor:</b>	244.0m <sup>2</sup>
<b>Alfresco:</b>	14.0m <sup>2</sup>
<b>Portico:</b>	5.0m <sup>2</sup>
<b>Total Area:</b>	263.0m <sup>2</sup>
<b>House Width:</b>	16.1m
<b>House Length:</b>	19.4m

**Murray Griffith**

**0407 230 367**

[murray@djroberts.com.au](mailto:murray@djroberts.com.au)

[djroberts.com.au](http://djroberts.com.au)

Images in this brochure may depict fixtures, finishes and features that are not included in our standard inclusions list. For detailed house pricing please talk to a sales consultant. Dimensions are approximate, please speak to a consultant.